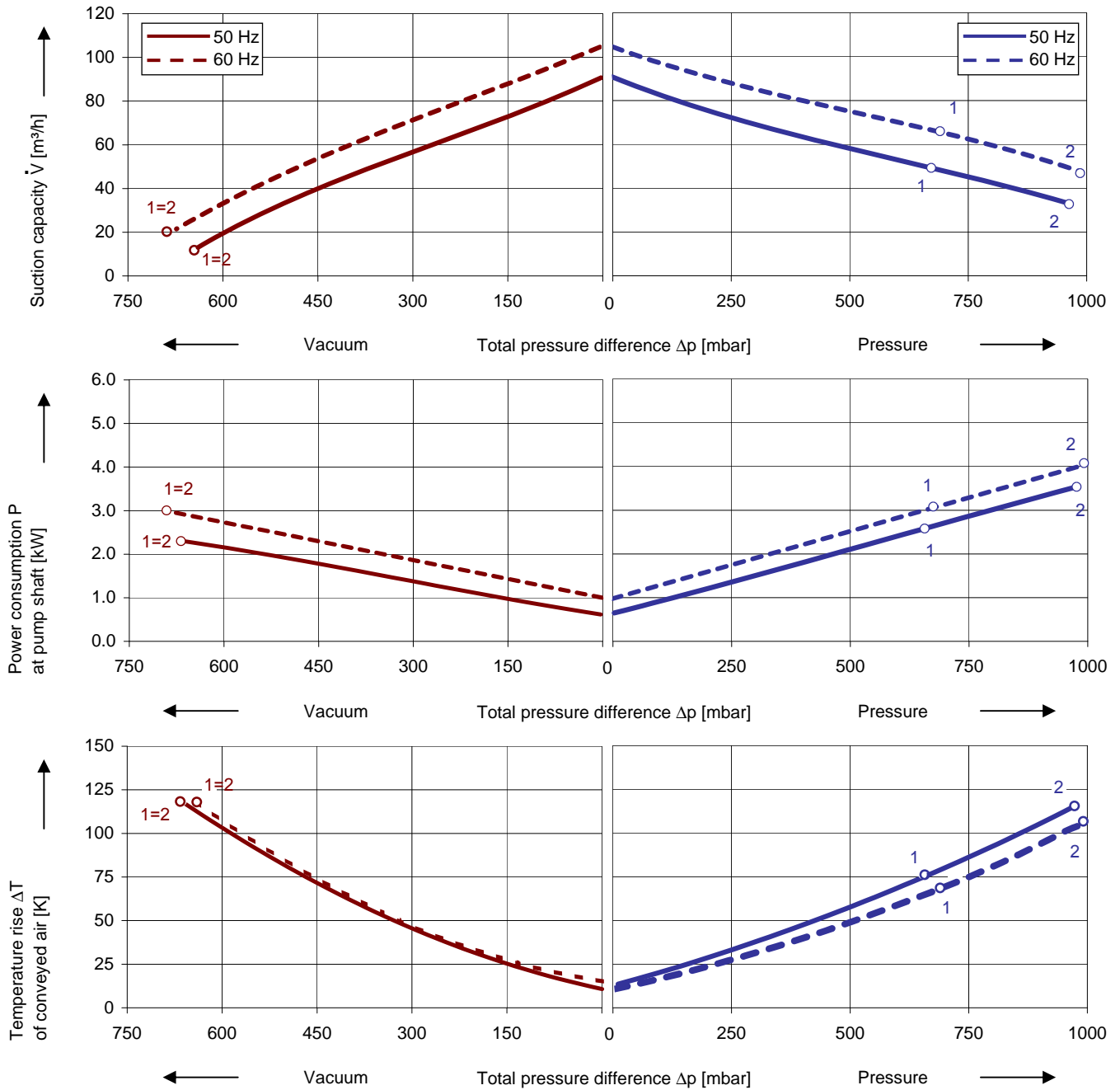


### Performance curves

#### Vacuum operation

#### Compressor operation



The performance curves are based on air at a temperature of 15 °C and an atmospheric pressure of 1013 mbar with a tolerance of ± 10 %. The total pressure differences are valid for suction and ambient temperature up to 25 °C. For other conditions please get in touch with us.

All 4RB pumps can be used both as vacuum pump and compressor in continuous operation over the total performance curve range. The motors are available as standard in protection category IP 55 and insulation class F.

Selection and ordering data										
Type 4RB 430										
No.	Fre- quency	Rated			Max. differential pressure <sup>2)</sup>		Sound pressure level <sup>3)</sup>	Efficiency <sup>4)</sup>	Weight Approx.	Order No.
		Voltage <sup>1)</sup>	Current	Power	Vacuum	Pressure				
					Hz	V				
<b>IE3 3~ 50/60 Hz, IP55, Insulation material class F(UL certificate number E481218)</b>										
1	50	190-210 Δ	J,9 Δ	2,5	-650	680	66	IE3	48	4RB 430-0AP31-1
	60	220-240 YY / 380-420 Y	F2,8 YY / 1,1 Y	3,0	-680	700	75	IE3		
2	50	190-210 Δ	13,3 Δ	3,45	-650	1000	66	IE3	54	4RB 430-0AP41-1
	60	220-240 YY / 380-420 Y	F5,8 YY / 7,8 Y	4,0	-680	980	75	IE3		
<b>IE3 3~ 50/60 Hz, IP55, Insulation material class F(UL certificate number E481218)</b>										
1	50	220-240 Δ / 380-420 Y	8,6 Δ / 5,0Y	2,5	-650	680	66	IE3	48	4RB 430-0AP36-1
	60	220-240 YY / 4 40-480 Y	10,4 Δ / 5,2 Y	3,0	-680	700	75	IE3		
2	50	220-240 Δ / 380-420 Y	11,6 Δ / 6,7Y	3,45	-650	1000	66	IE3	54	4RB 430-0AP46-1
	60	220-240 YY / 4 40-480 Y	13,2 Δ / 6,6 Y	4,0	-680	980	75	IE3		
<b>IE3 3~ 50/60 Hz, IP55, Insulation material class F(UL certificate number E481218)</b>										
1	50	380-420 Δ / 660-725 Y	5,0 Δ / 2,9Y	2,5	-650	680	66	IE3	48	4RB 430-0AQ37-1
	60	440-480 Δ	5,2 Δ	3,0	-680	700	75	IE3		
2	50	380-420 Δ / 660-725 Y	6,7 Δ / 3,9Y	3,45	-650	1000	66	IE3	54	4RB 430-0AQ47-1
	60	440-480 Δ	6,6 Δ	4,0	-680	980	75	IE3		
<b>IE3 3~ 50/60 Hz, IP55, Insulation material class F(UL certificate number E481218)</b>										
1	50	220-240 Δ / 380-420 Y	8,6 Δ / 5,0Y	2,5	-650	680	66	IE3	48	4RB 430-0AQ36-1
	60	440-480 Y	5,2 Y	3,0	-680	700	75	IE3		
2	50	220-240 Δ / 380-420 Y	11,6 Δ / 6,7Y	3,45	-650	1000	66	IE3	54	4RB 430-0AQ46-1
	60	440-480 Y	6,6 Y	4,0	-680	980	75	IE3		




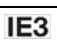





- 1) In case of frequency converter operation the standard motor insulation system is suitable for converter input voltages up to 500 V.
- 2) Relief valves available for limiting differential pressure.
- 3) Measuring surface sound pressure level acc. to EN ISO 3744, measured with an equivalent unit at a distance of 1 m. The pump is throttled to an average suction pressure, with piping connected, but no relief valves fitted, tolerance ±3 dB (A).
- 4) The motors according to NEMA MG1-12. NP=NEMA Premium; NEMA Premium includes IE3.
- 5) Klixon recommended for motor overload protection. Ordering example: 2RB 710-□□□□-Z

All 2RB blowers match the 2006/42/EC (machinery) and 2014/35/EU (low voltage) directives and the EN 60034 norm "Rotating electrical machines".

Service factor (SF) and motor efficiency according NEMA MG1-12.

Voltage tolerances for three phase motors are +/-10%.

The frequency tolerance is +/- 2 % maximum.

Voltage range		Efficiency	60 Hz	2RB ...-1.	□	□
50 Hz	60Hz					
<b>3~</b>						
200 VΔ	200 V YY / 230 VΔ / 400 VY		•		P	1
190-210 VΔ	190-210 VYY / 220-240 VΔ / 380-420VY		•		P	6
200 V YY / 230 VΔ / 400 VY	230 V YY / 460 VY		•		P	6
190-210 VYY / 220-240 VΔ / 380-420VY	220-240 VYY / 440-480VY		•		Q	1
190-210 VΔ	220-240 VΔ / 380-420VY		•		Q	3
475-525 V Y	550-600 V Y		•		Q	5
475-525 VΔ	550-600 VΔ		•		Q	5
220-240 VΔ / 380-420 V Y	440-480VY		•		Q	6
400 VΔ / 690 V Y	460 VΔ		•		Q	7

Changes in particular of the quoted performance curve, data and weights may occur without prior notice. The data given does not constitute an obligation from our side to deliver as shown

**GREENCO**®  
Your Ultimate Source for Vacuum and Pressure

ZHEJIANG GREENCO INDUSTRY CO LTD  
Rongshi Road Danya Industrial Zone Zeguo  
Town Wenling 317523 China  
Tel.: +86-576-86428999  
Fax: +86-576-86409555  
www.greenco.cn  
E-mail:greenco@greenco.cn